

Chart 1

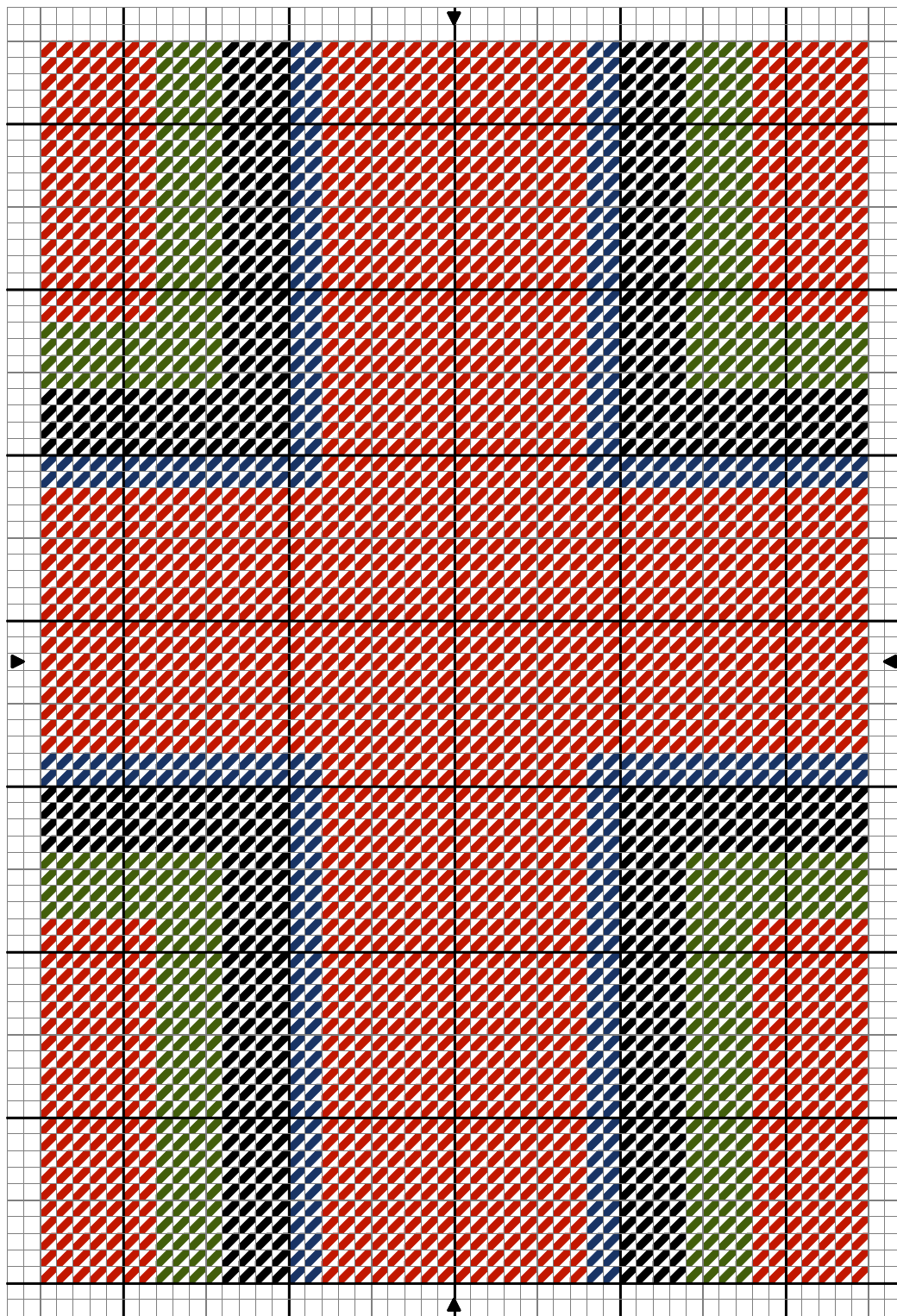


Chart 2

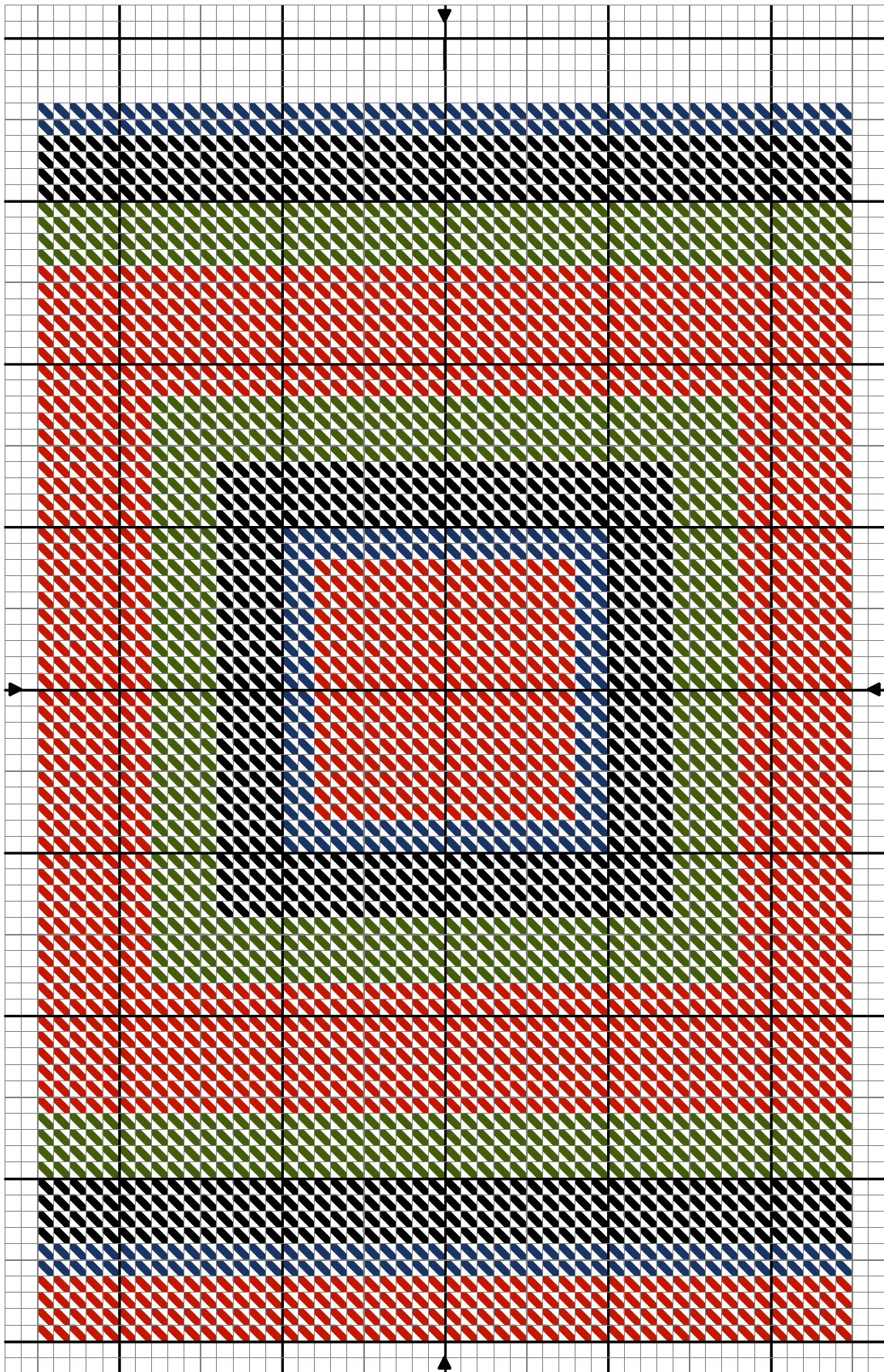
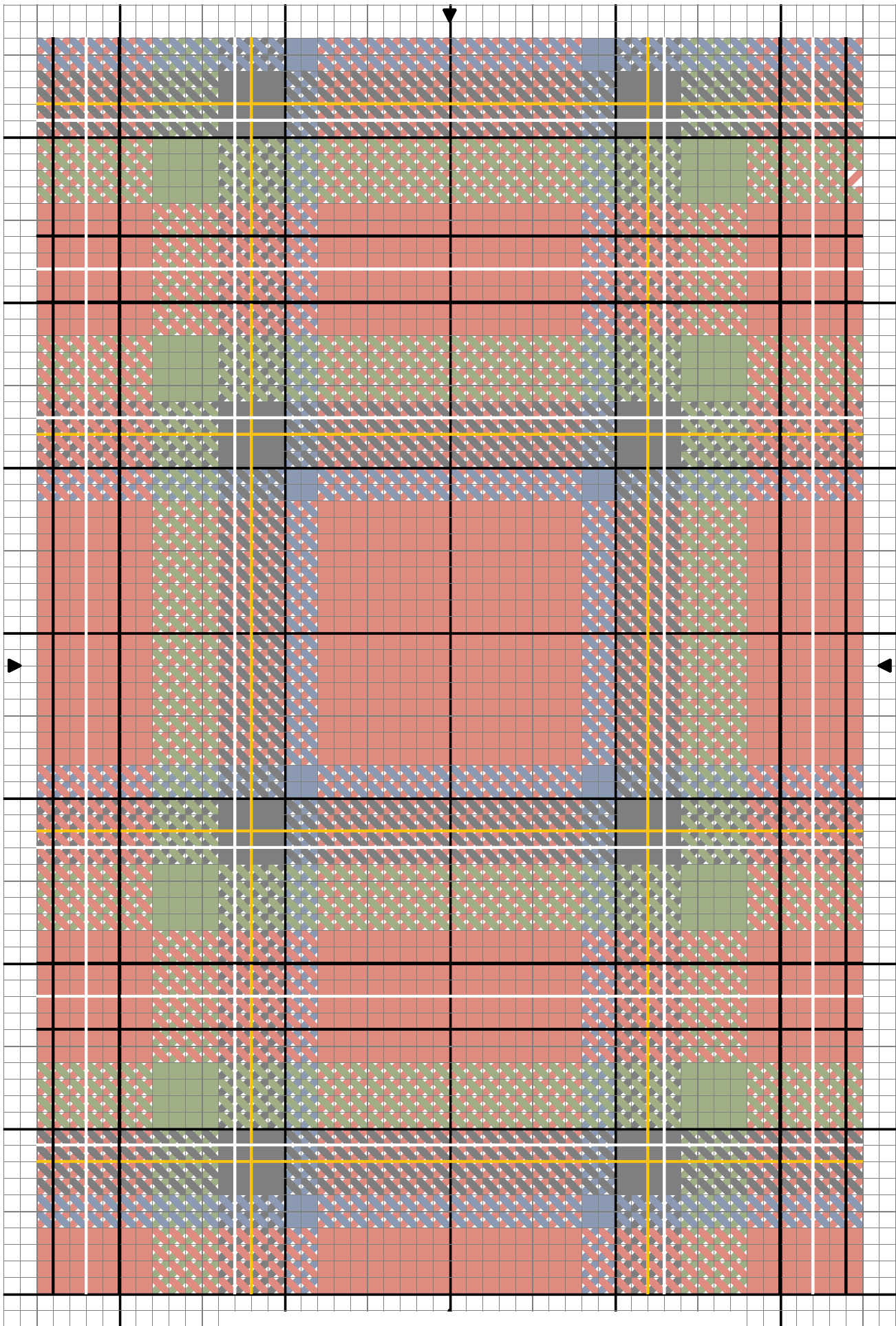






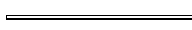

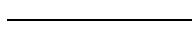
Chart 3



Royal Stuart Tartan

		DMC	Anchor
	Christmas Red lt	666	46
	Delft vy dk	797	139
	Forest Green dk	905	257
	Black	310	403

Backstitch in:

	White bright	Blanc	1
	Lemon dk	973	290
	Black	310	403

Note: This Royal Stuart tartan design was worked on a red-edged wine bottle apron as a Christmas present, but could of course have other uses.

This design is worked in three stages.

When tartan is woven the wools for the warp and weft change during the weaving process so that some areas where both are the same colour makes a solid block of colour. In other areas where the threads are a different colour there is a mottled effect.

The first stage is half cross stitch following Chart 1. The second stage completes the cross stitch using Chart 2. To finish there are lines of double running stitch (or backstitch if you prefer) in black, yellow and white illustrated in Chart 3 where the cross stitches are faded for illustration purposes.

On 14 count Aida the cross stitch is worked in two strands. The black double running stitch is also worked in two strands with the yellow and white lines in three strands.

