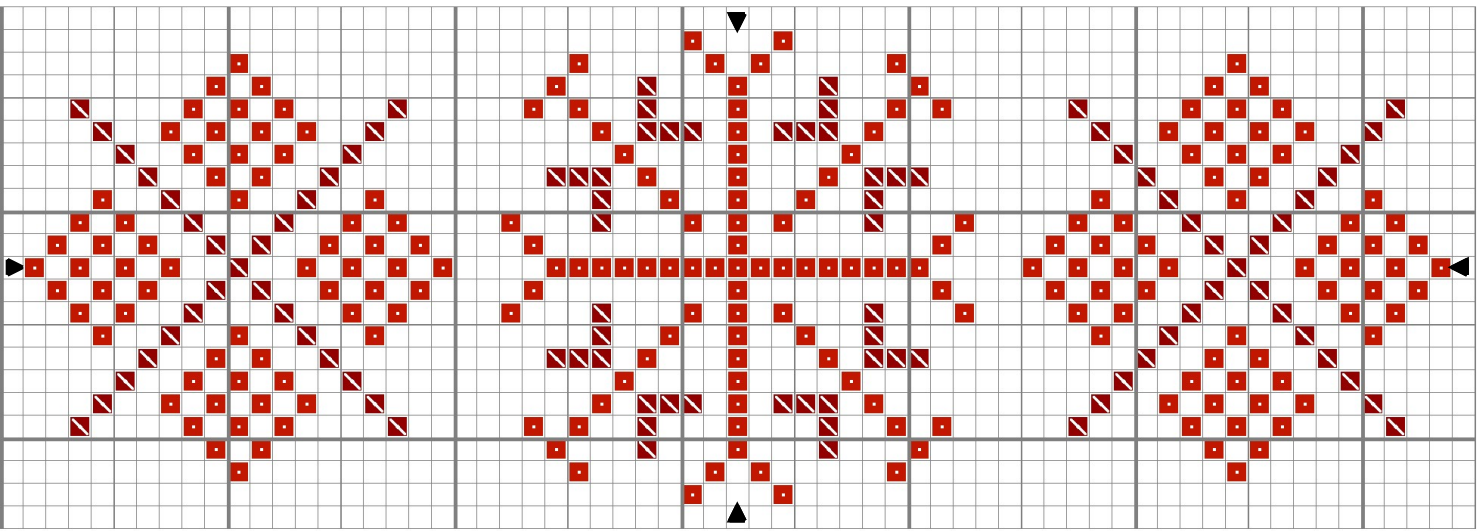


# Red Snowflakes



Christmas Red lt	Anchor 46	DMC 666	Madeira 0210
Christmas Red med	47	321	0509

Each repeat worked over 11 count will be approx. 6 inches square.  
Each repeat worked over 14 count will be approx. 4.7 inches square

Decide on the project in which you are going to use this design and allow 3 inches (9 cms) all round for working and mounting. Take care not to carry the dark threads over open areas on the reverse of the white fabric as they could shine through.

This could be used on a Christmas stocking cuff, as a border on a Christmas towel or as a border on any project.

Design By: Anne Peden 2005

Copyright© By: Anne Peden [www.artsanddesigns.com](http://www.artsanddesigns.com)

